

ELWOOD POLICE DEPARTMENT
2012 ANNUAL REPORT





INTRODUCTION

Table of Contents

| | |
|--------------------------|----|
| Mission Statement | 3 |
| Organizational Structure | 4 |
| Budget | 5 |
| Police Calls For Service | 6 |
| Crime Statistics | 7 |
| Traffic Enforcement | 9 |
| Technology | 12 |



Chief Fred W. Hayes

It is with great pride that I present the Elwood Police Department 2012 Annual Report to the Village President, Board of Trustee's, and all citizens of Elwood. This report highlights the numerous challenges and work of the men and women of the Elwood Police Department during the past year. I am thoroughly impressed with our member's performance throughout the entire year. As you peruse this publication, I believe you will be equally impressed with the professional accomplishments and the quality of service provided by our members.

I am excited and humbled to have been selected to serve as the Chief of Police for the Elwood Police Department. During the past year we have made tremendous strides to improve the department and position ourselves for continued success in the future.

As the police department continues to work and maintain a peaceful, tranquil, and vibrant village, we recognize our greatest strength is our partnership with the community. Our success depends on our ability to build trust and collaboration with the very citizens we serve. Together we serve as a force multiplier against those who chose a path of wrongdoing.

During the past year a strategic plan was initiated to thoroughly assess our organization in order to become more efficient and effective. The Department continues its advancement with the use of newly developed technology and a better use of resources in order to provide smarter and more efficient policing.

We look forward to the future with optimism and determination as we continue our advancement to excellence in community service.

Chief Fred W. Hayes

Special points of interest:

- Department Budget
- Village of Elwood Crime Statistics
- Year end total for traffic citations
- Department Technology Upgrades
- Police Calls For Service Five Year Trend



Our greatest strength is our partnership with the community

ELWOOD POLICE DEPARTMENT

2012 ANNUAL REPORT



Village of Elwood

• Established 1889 •

Proud of our past, Building our future.

Mission Statement

The mission of the Elwood Police Department is to protect and serve the community we police in a legal, ethical and professional manner, using the community policing strategy, and engaging in problem-solving when appropriate.



Department Values

We believe in the principles embodied in our Constitution, and recognize the authority of federal, state, and local laws.

We believe in the dignity and worth of all people.

We believe a disciplined department professional in both conduct and appearance is necessary to maintain public confidence.

We believe we must maintain the highest standards of integrity and honesty in all our actions.

We believe we are accountable to the residents of the community and each other.

We believe our authority is to be exercised responsibly.

We believe in managing our resources in prudent and productive ways.

Administration/Records
Phone: 815-424-1090
Fax: 815-423-5081

www.villageofelwood.com



Emergency: 911

Emergency (dispatch):

815-423-5411

401 E. Mississippi Ave.
Elwood, IL 60421-0435

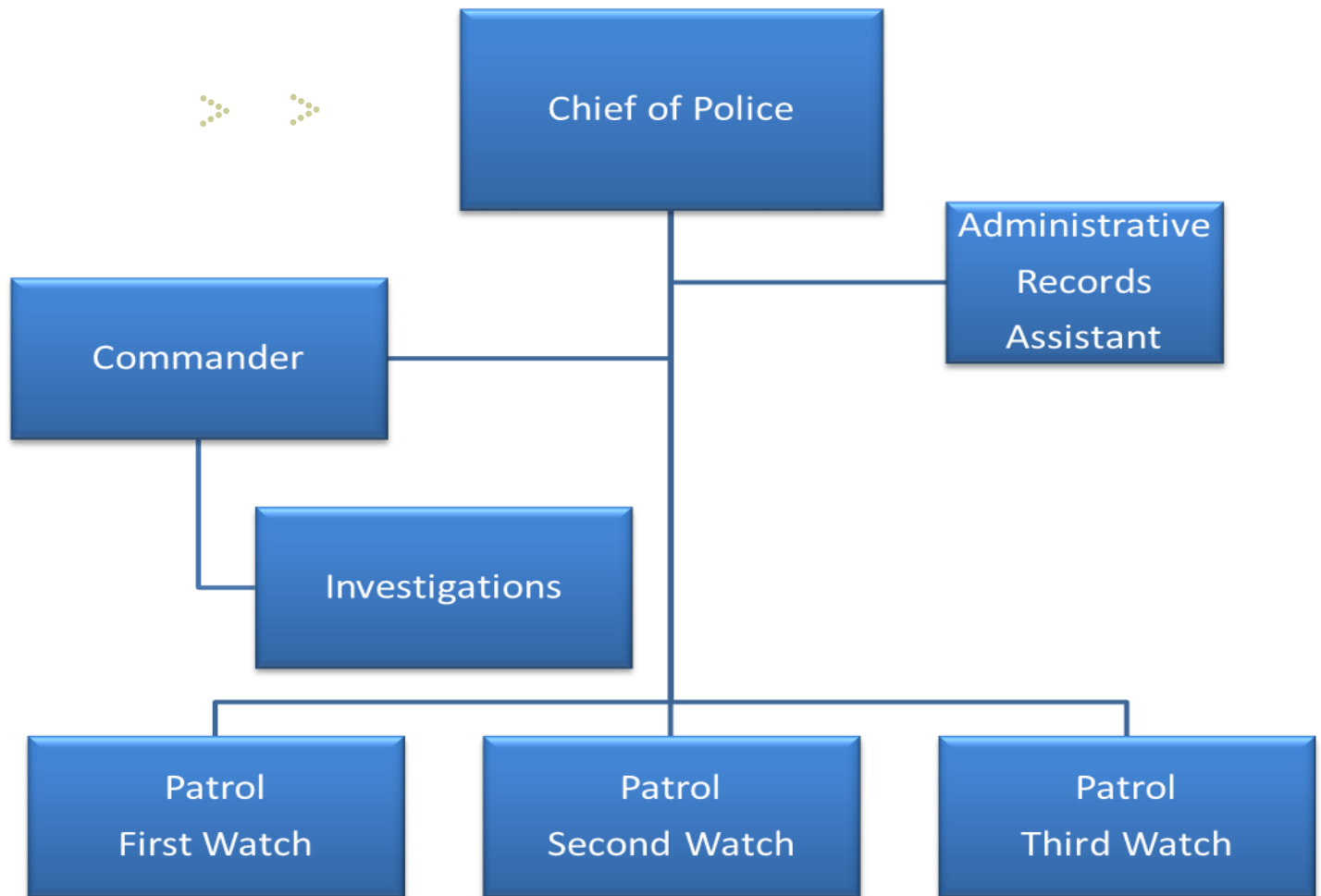
Our greatest strength is our partnership with the community



Village of Elwood
• Established 1889 •
Proud of our past, Building our future.

2012 Annual Report

Organizational Structure

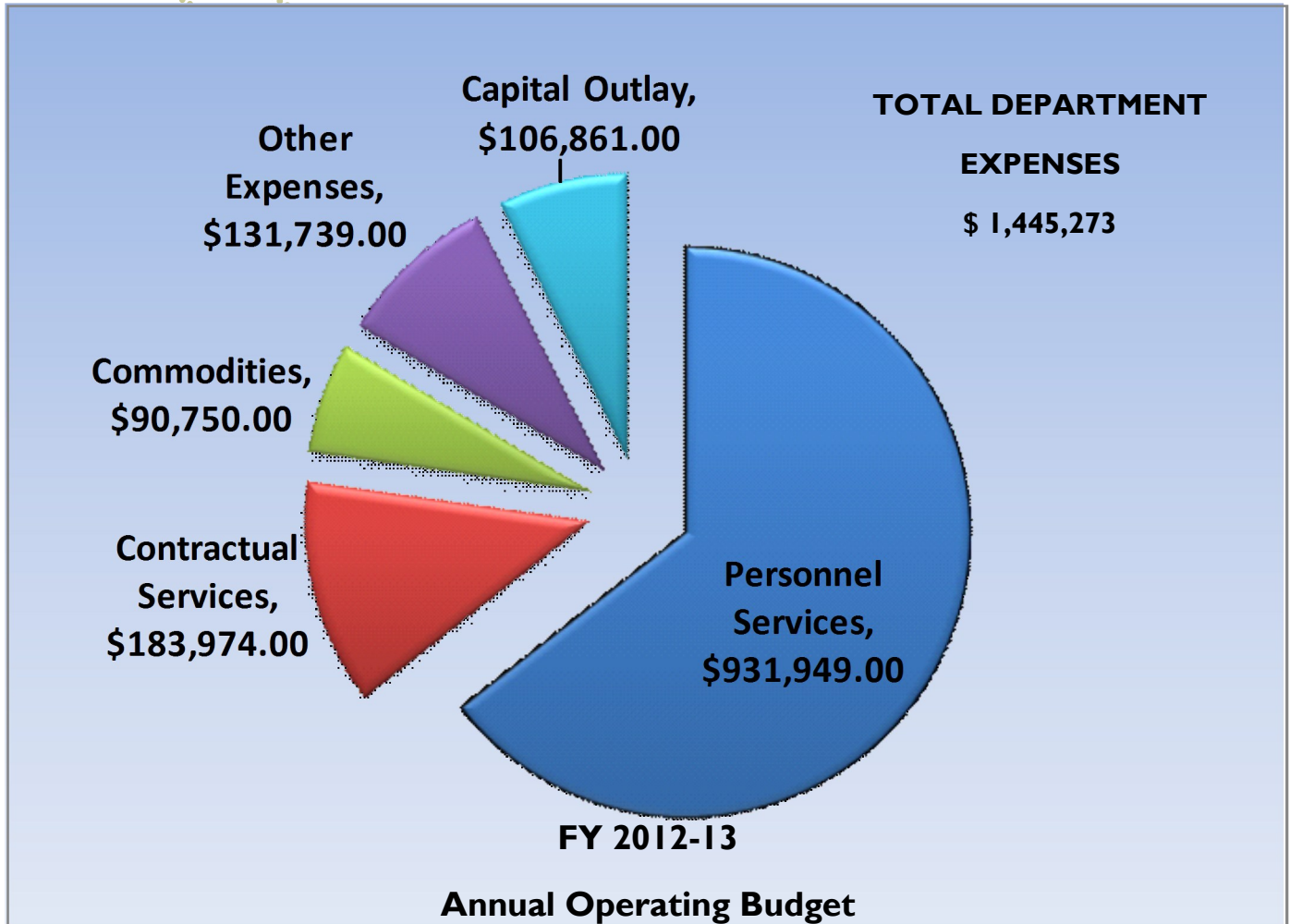


Our greatest strength is our partnership with the community



2012 Annual Report

Budget



Sworn Positions 2012

| | Count |
|--------------------|-------|
| Chief | 1 |
| Commander | 1 |
| Patrol Officers | 8 |
| Part-time Officers | 3 |

Civilian Positions

| | Count |
|------------------------|-------|
| Administrative/Records | 1 |
| Part-time data entry | 1 |

Our greatest strength is our partnership with the community

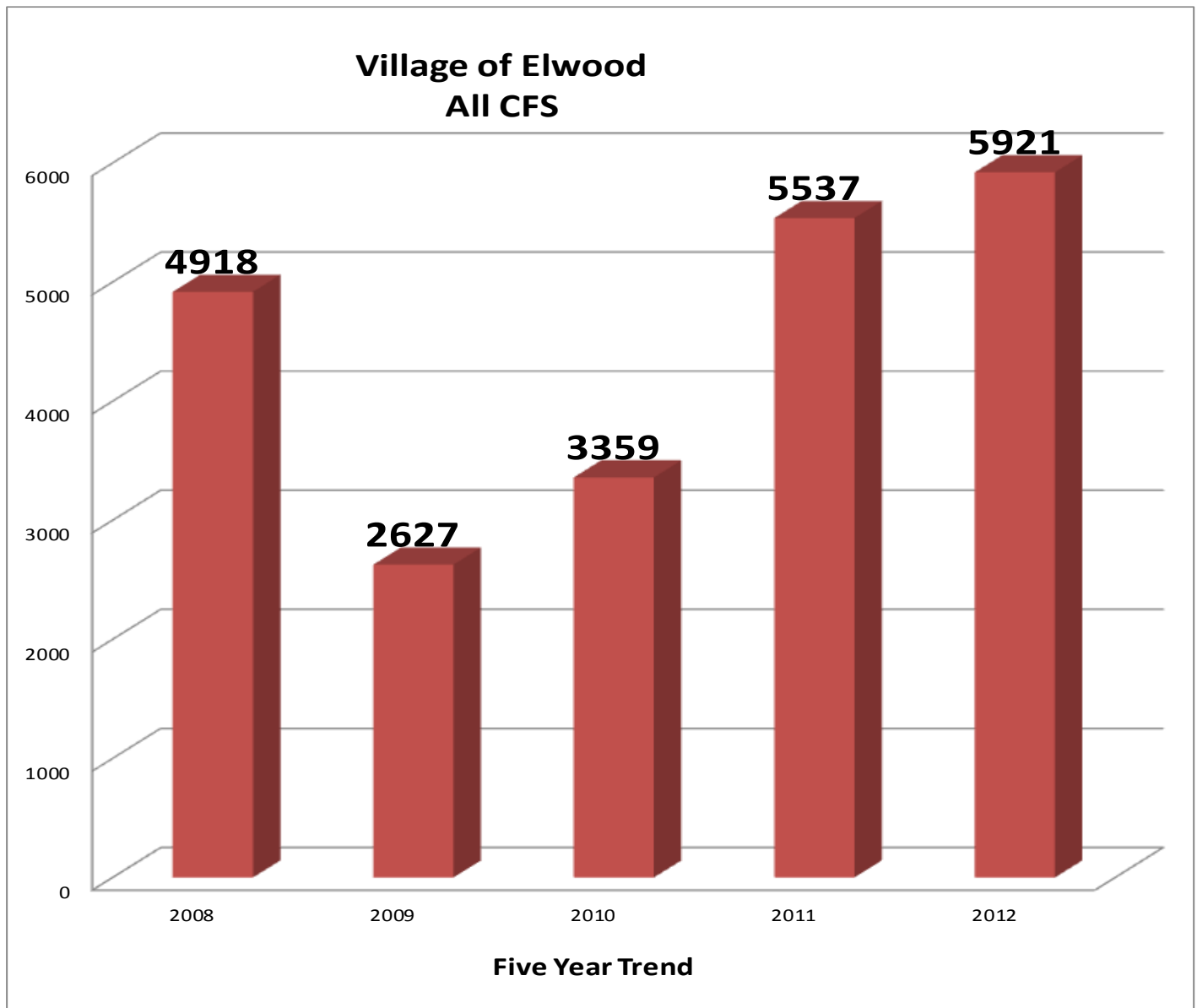


2012 Annual Report

Police Calls For Service

Calls for service are calls made to the police department either using emergency 911 or non-emergency numbers, and service initiated by officers. The Elwood Police Department is a service-oriented law enforcement agency, therefore officers respond to many types and requests for assistance. Whether it's a crime in progress or to help someone locked out of their car, the police respond in a timely manner.

The below graph represents all calls for service (CFS) in the Village of Elwood over the past five years.

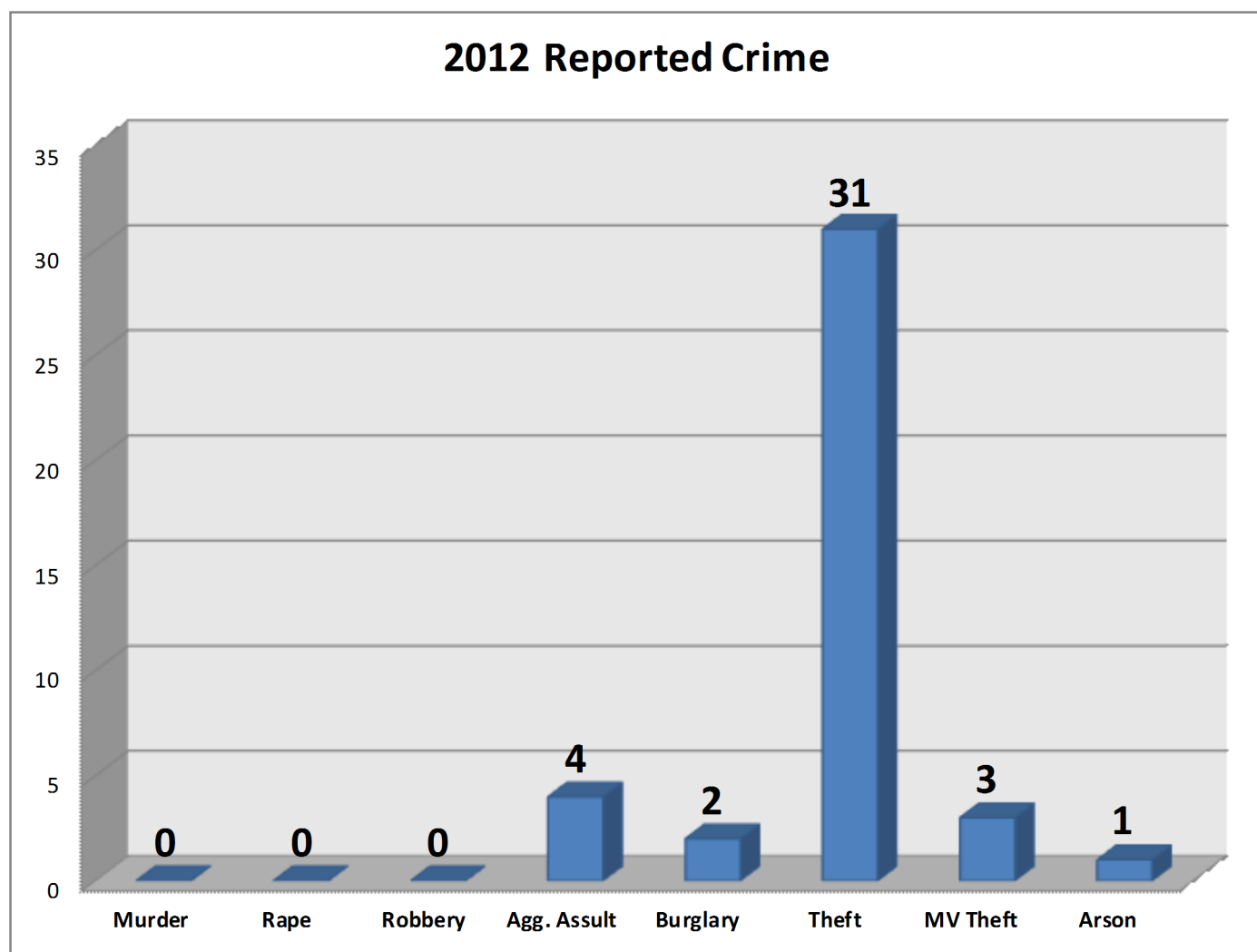


Our greatest strength is our partnership with the community

Crime Statistics

2012 Annual Report

The following graph represents all reported crime in the Village of Elwood for 2012. The Elwood Police Department is in compliance with the FBI Uniform Crime Reporting (UCR) program and Illinois State Police I-UCR as mandated by state statute. The police department submits documented reported crimes to I-UCR under the following two main categories, A. Violent Crimes Against People B. Crimes Against Property. A total of eight crime categories are then recorded as follows, Violent Crimes (Murder, Forcible Rape, Robbery, Aggravated Assault) and Crimes Against Property (Burglary, Theft, Motor Vehicle Theft, Arson).



Our greatest strength is our partnership with the community

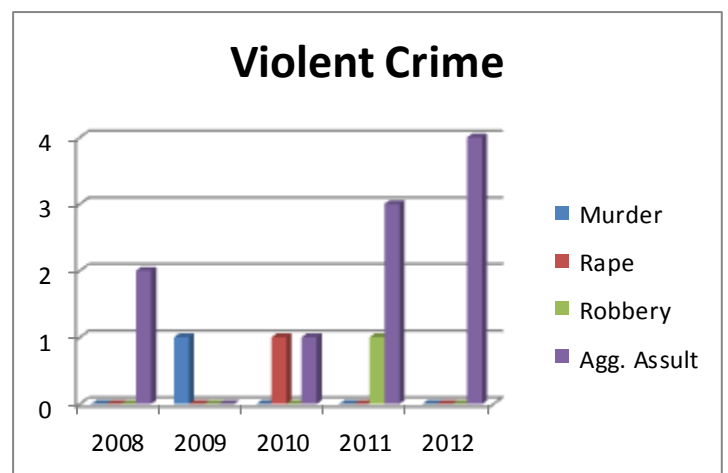
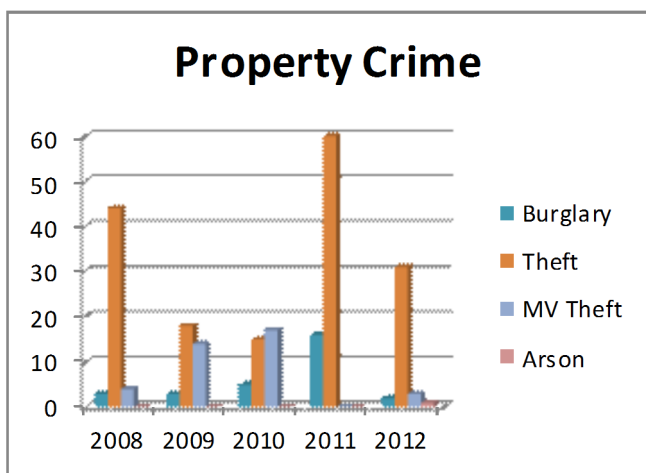
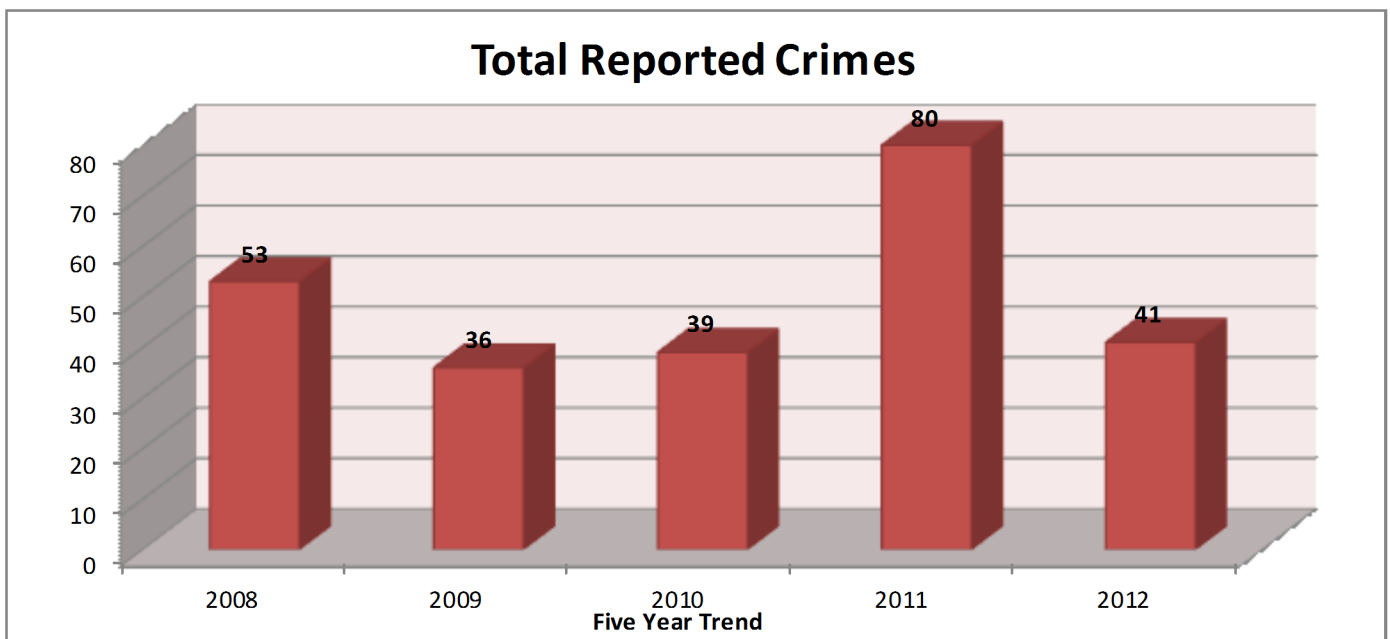


2012 Annual Report

Crime Statistics



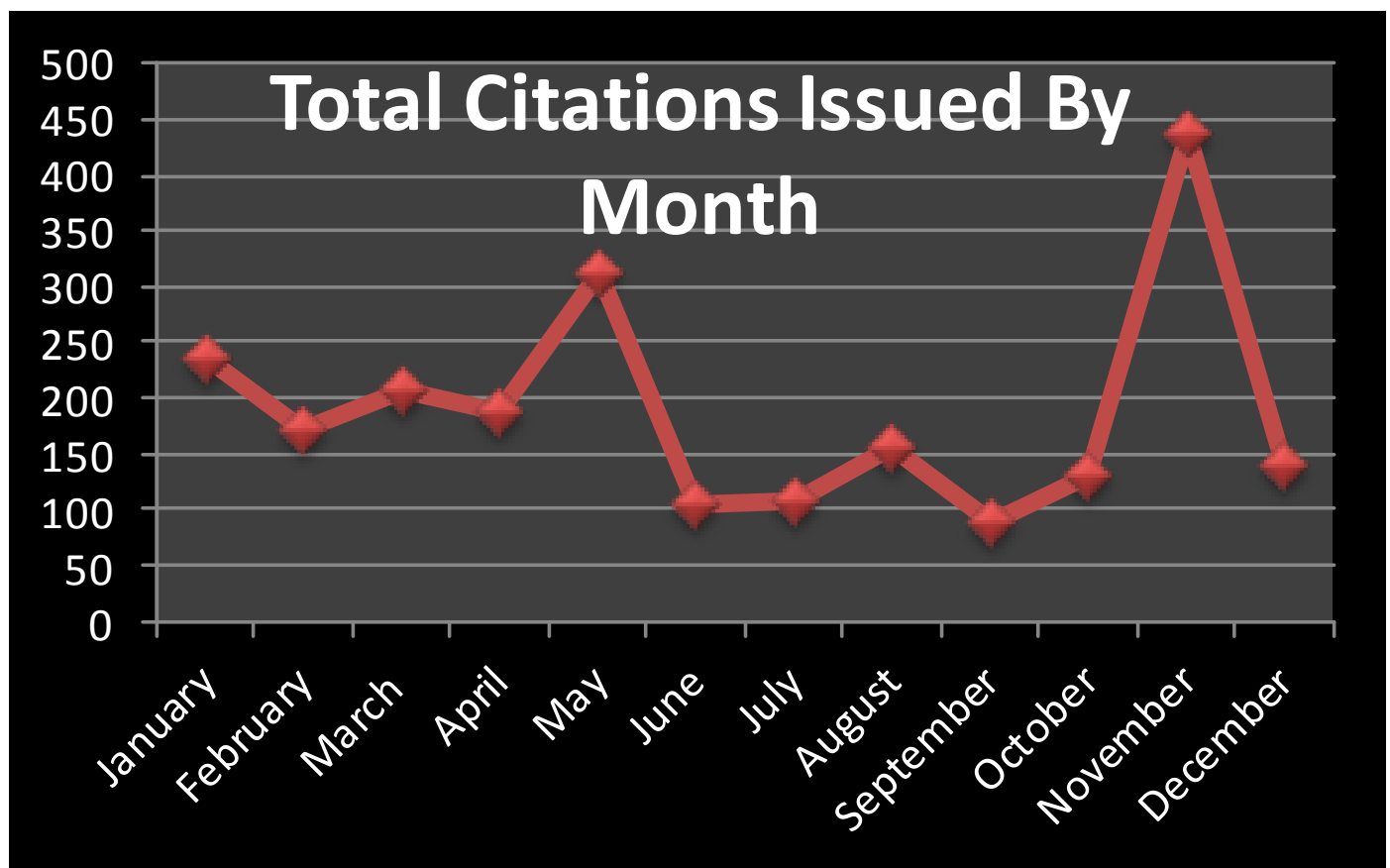
The following graphs represent all reported crime in the Village of Elwood over the past five years, both Violent Crimes Against People and Crimes Against Property. A total of eight crime categories are then recorded as follows, Violent Crimes (Murder, Forcible Rape, Robbery, Aggravated Assault) and Crimes Against Property (Burglary, Theft, Motor Vehicle Theft, Arson).



Our greatest strength is our partnership with the community

Traffic Enforcement

Traffic Enforcement is an important duty of patrol officers at the department. Special enforcement periods and campaigns have been designed to improve the safety of all residents and motorists traveling through the village. Elwood police officers are committed to improving the efficiency and safety of passenger vehicles and truck transportation in addition to pedestrian and bicycle safety. Officers wrote a total of **2274** traffic citations in 2012.



Our greatest strength is our partnership with the community



Village of Elwood
• Established 1889 •
Proud of our past, Building our future.

2012 Annual Report

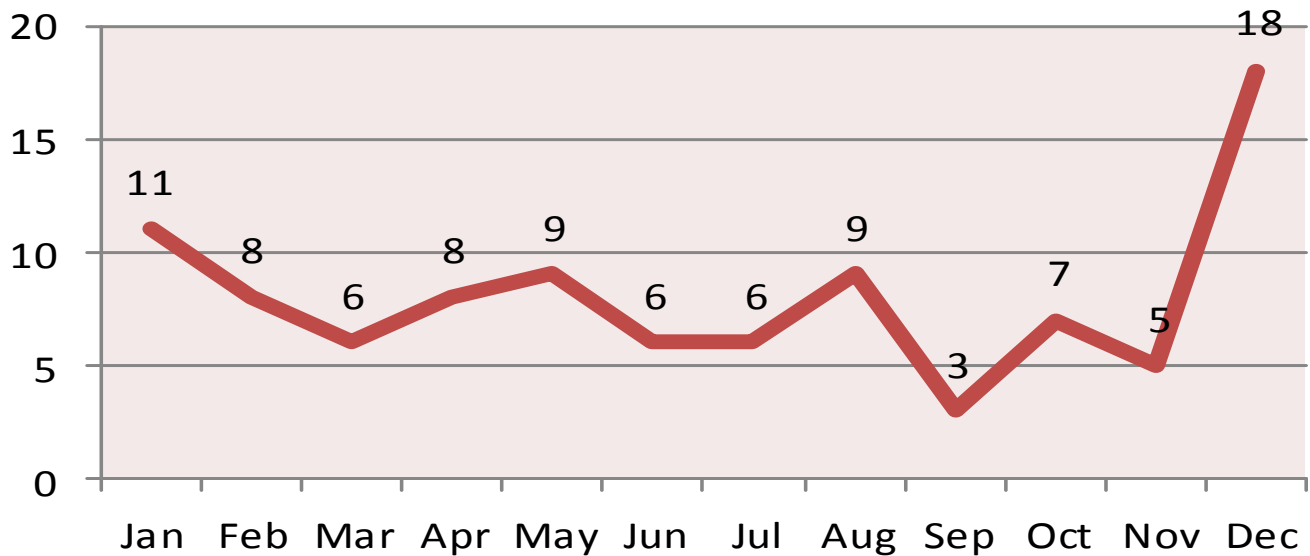


Traffic Enforcement



During 2012 officers responded to **97** traffic accidents. As first responders our primary priority is to assist the injured in the interest of preserving life. We work closely with the Elwood Fire Protection District to ensure quick medical response, and to provide safeguards at the accident scene. Additionally officers conduct an accident investigation and complete the Illinois Department of Transportation Crash Report. Crash data submitted to IDOT is an essential tool used for reducing serious injury and fatal crashes.

Crash Investigations 2012



Our greatest strength is our partnership with the community

Traffic Enforcement



Elwood Improves Safety at Pedestrian Crosswalks



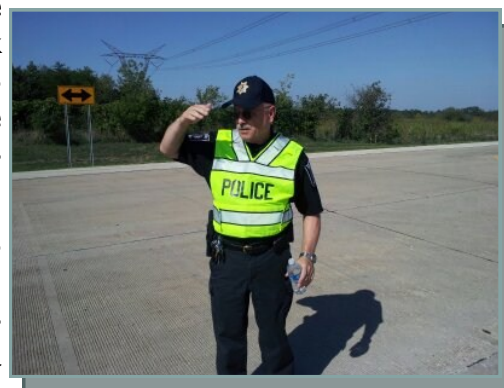
The Elwood Police Department reminds motorists to exercise due care when approaching crosswalks in the Village. Drivers should pay special attention to pedestrians or any persons operating a bicycle. Crossing the street seems like a simple matter but children can be exceptionally vulnerable. In fact many young children may not understand the dynamics involved, when attempting to cross a street safely. Unfortunately, children do have a tendency to dart out into traffic without checking for approaching vehicles. Therefore, it's incumbent upon our residents to pay particular attention for children when driving through a residential area.

In addition, residents are advised Illinois law was changed back in 2010. It now requires a driver to stop for a pedestrian in the crosswalk and not just yield. A pedestrian can step into a crosswalk legally only when an oncoming vehicle has time to stop. The new laws purpose is to help improve safety and reduce crashes

involving pedestrians. The former crosswalk law in Illinois only required drivers to yield to pedestrians and stop when necessary. Now drivers are required to make a full stop for pedestrians in all crosswalks. Drivers should be cautious as the law applies to all crosswalks, even those that are unmarked or don't have a stop sign or traffic signal. Similar to those found on our residential streets here in town.

As a measure to improve safety and remind motorists of the new law, the Village of Elwood recently placed marked traffic control warning signs at the crosswalk of Mississippi Ave and Chicago St.

This intersection experiences a high amount of pedestrian activity, particularly children walking to or from school, along with many visitors to the park. Elwood Police officers have increased their enforcement efforts to improve safety at the intersection. Violators can receive a moving violation and face a penalty of \$125 dollars. It's important for drivers to remember that three convictions on moving violations within any 12-month period will cause a driver's license suspension.





Village of Elwood
• Established 1889 •
Proud of our past, Building our future.

2012 Annual Report

Technology

New Police High Tech Vehicle

The Elwood Police Department recently launched its new prototype Homeland Security Vehicle (HSV) to enhance policing in and around the Elwood BNSF CenterPoint Intermodal transportation center. The HSV is equipped with state-of-the-art detection technology to discover an



accidental or criminal event involving chemical, biological, radiological, nuclear, and explosive materials (CBRNE).

The purchase of the vehicle was made possible by a grant awarded to the Elwood Police Department. The Department of Homeland Security (DHS) provided the necessary funding, in the amount of \$87,165, to purchase the 2012 Ford Expedition 4X4 Special Service Package and associated equipment.

Although the primary responsibility to prevent, detect, and deter a possible terrorist attack through our nations global transportation system remains with the U.S. Customs and Border Protection agency, local law enforcement shares a dual role and responsibility.

The responsibility for responding to emergency situations begins at the local level. The Elwood Police Department works closely with the Elwood Fire Protection District, BNSF Police, Will County Emergency Management, and has excellent working relations with all public safety jurisdictions bordering the Village of Elwood to facilitate optimal emergency response when necessary in any of the jurisdictions, not only involving emergencies at the intermodal facility.

The new high tech vehicles interior resembles the cockpit of NASA Apollo 13 rocket ship, with numerous controls and instrument devices. A mobile data computer is at the heart of the on-board technology which also includes a Federal Signal, PIPS Technology, Automatic License Plate Reader (ALPR) camera system. The ALPR is capable of reading hundreds of license plates at a time and alerts police of stolen or wanted vehicles. The HSV has a roof mounted thermal imaging camera capable of detecting people in total darkness. It is also equipped with a fiber optic camera, radiation detector, gas meter, and in-car video camera recording system.

The ability to detect hazardous materials from CBRNE will provide a greater degree of safety for Village of Elwood residents, employees of the intermodal, and the surrounding communities. The Homeland Security Vehicle will patrol on the streets, able to detect CBRNE threats, whether accidental or intentional, and offers real-time threat prevention capabilities.



Our greatest strength is our partnership with the community



Village of Elwood
• Established 1889 •
Proud of our past, Building our future.

2012 Annual Report



Technology

Department Purchases Electronic Control Devices



are only authorized to use the TASER on subjects who are actively resisting arrest or threatening to assault an officer.

Each TASER is equipped with a video camera system which offers increased accountability, not just for police officers, but for the people they arrest. The TASER camera allows officers to capture vital video information prior to, during, and after the potential deployment of a TASER ECD.

In an effort to reduce injuries to police officers and the combative subjects they confront, the Elwood Police Department recently completed the purchase of electronic control devices (ECD). A total of 9 TASER devices were purchased from Ray O' Herron Co., suppliers of public safety equipment.

Elwood police officers completed 8 hours of certified training on the operation and safety of TASER ECD's. Additionally the police department adopted model policy on the use and deployment of the TASER. Police officers



Our greatest strength is our partnership with the community



Village of Elwood
• Established 1889 •
Proud of our past, Building our future.

2012 Annual Report

Technology

Elwood Starts Patrol Rifle Program



The Village President and Board of Trustees' approved the purchase of 10 Rock River Arms L.E. .223 CAR A2 Carbine in the amount of \$11,526 to arm Elwood Police Officers to succeed.

Like many other police departments across the nation, the Elwood Police Department saw the need to make the switch to a police rifle from the police shotgun. With the local criminal element carrying more high-capacity handguns and rifles, there is a need to be able to counter those kinds of threats when the need arises.

The police shotgun, long known as a stalwart police firearm for many years, is not without its limitations. From previous studies performed by the Elwood Police Command Staff, most shotgun projectiles over-penetrate in normal urban construction materials, in

comparison to 5.56 caliber ammunition, usually fielded in the AR-15 rifle format.

The AR-15 rifle also has a much greater effective range than the police shotgun, even when the shotgun is loaded with slug ammunition. The AR-15 rifle is also much more ergonomic than the police shotgun, has less recoil and larger magazine capacity, and more easily allows the department to make necessary additions to the rifle, such as night sights and a white light system to differentiate between armed criminals and innocent citizens in low light scenarios.

With an ever increasing nation-wide concern for active-shooter events, the move to the AR-15 patrol rifle allows our officers to better protect our citizens and themselves while performing their daily duties.

Our greatest strength is our partnership with the community

Crime Prevention

How to Better Protect Your Home and Property

The Elwood Police Department strives to provide professional police protection to our residents. In order to maintain a



safe and

terrent effect against crime. When police and residents work together they become a force multiplier to improve the quality of life for all citizens. The key component in this strategy is to prevent crime from occurring in the first place, thus reducing our fear of becoming a victim. Therefore, it is the desire of the Elwood Police Department to provide residents with the information necessary to maintain a safe home environment through a crime prevention initiative.

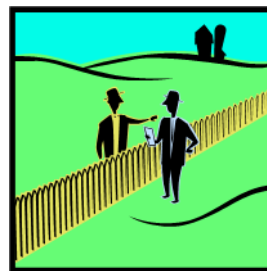
peaceful community we must continually provide crime deterrent strategies and programs for the citizens and business within the Village of Elwood.

By working collaboratively between the police and the community strong partnerships are formed that have a powerful de-

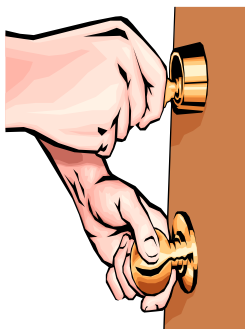
Crime reduction occurs with a successful program. Officer and Citizen cooperation is the only effective mechanism for successful crime prevention. Become

involved by beginning with a Security Survey of your own property, thus making you less vulnerable as a potential target. The security survey can provide residents with the necessary information to improve the overall safety of their surroundings. The goal of target hardening is to

make crime targets, such as a home, less vulnerable to break-ins. A police response to an event after a crime has been committed



shifts our focus from a proactive stance to that of a reactive position and consequently becomes less effective. We can define crime prevention as a progressive step in achieving effective law enforcement.



Law enforcement must remain the facilitator to engage and inform citizens on how to better protect their homes and property. As a result we can build a vibrant safe community and remain vigilant, not fearful. Please call the **Elwood Police Department at (815) 424-1090** and schedule an appointment for a home security survey and information on how you can better protect your home against crime.

Our greatest strength is our partnership with the community



Village of Elwood
• Established 1889 •
Proud of our past, Building our future.

2012 Annual Report

Elwood Police



Village Clerk Patricia Buchenau gives the oath of office to newly appointed Officer Todd Matichak.



Our greatest strength is our partnership with the community